

VIII LAPIS “Pulsations along Stellar Evolution”

Pulsating White Dwarf Stars *exercices*

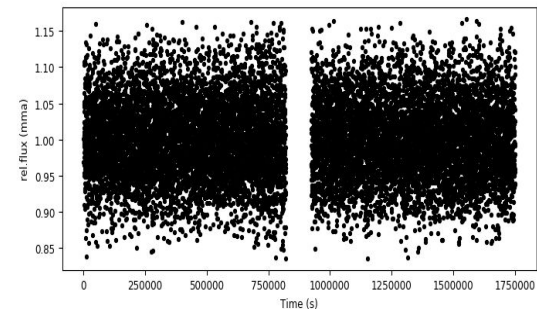
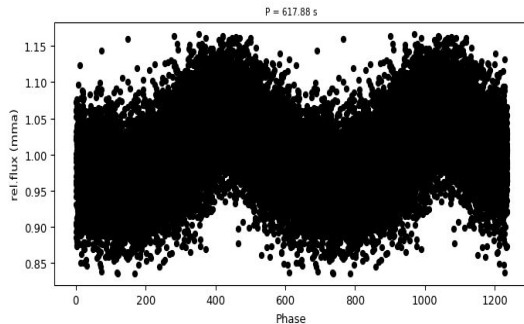
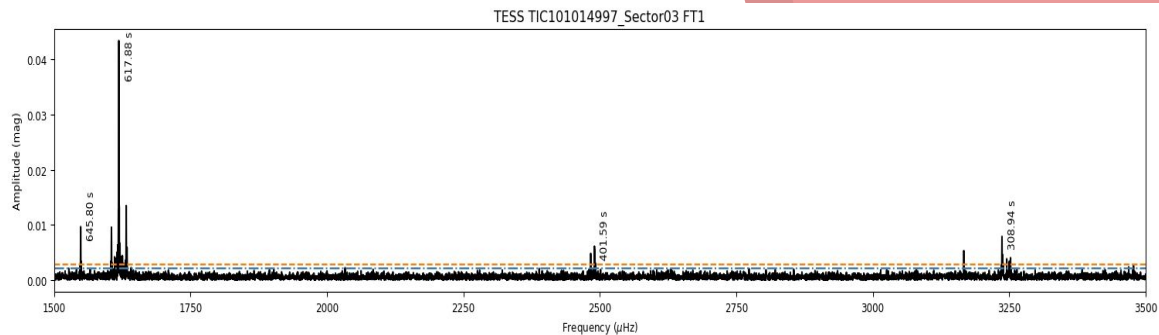
Alejandra Romero

Universidade Federal do Rio Grande do Sul

Star01: BPM 31594

Tess

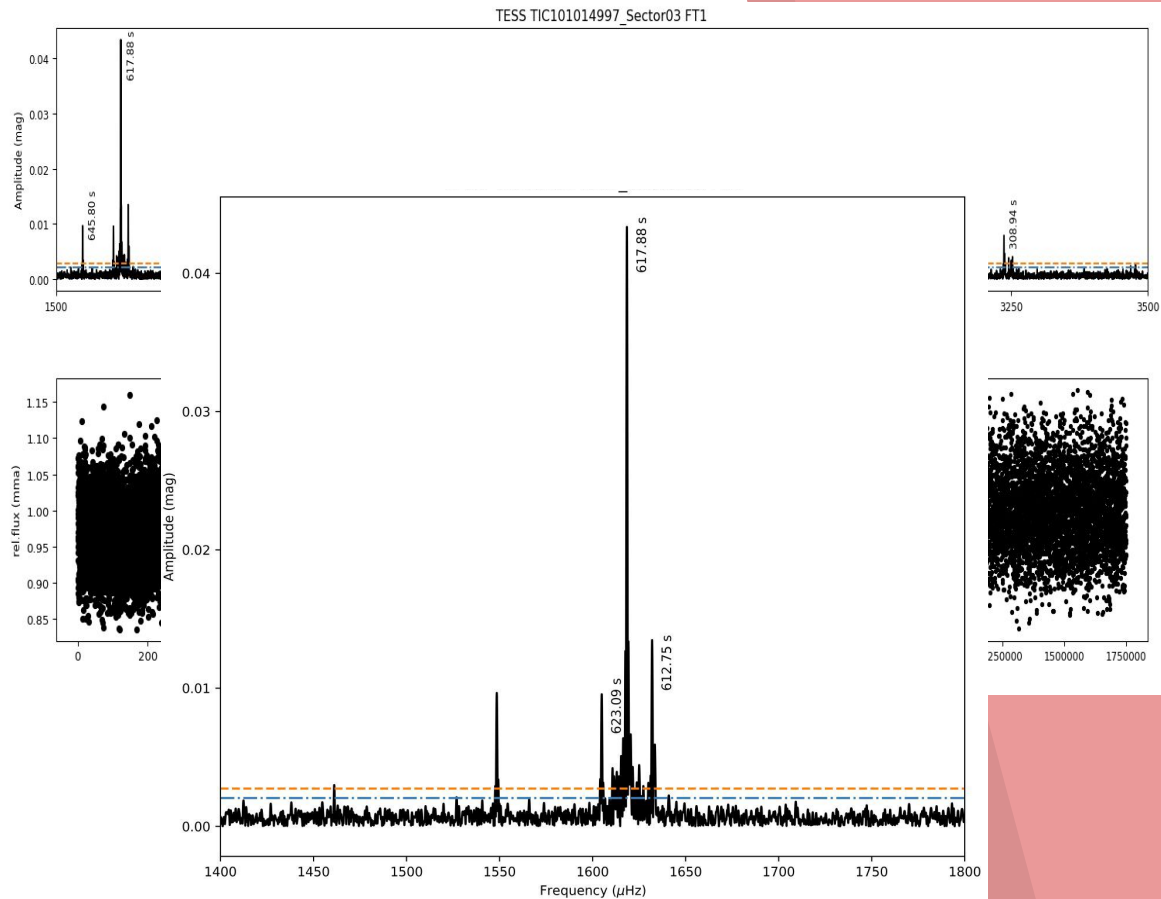
	Freq (mHz)	P (s)	amp (mag)	
F1	1618.4013	617.8937	0.04336	
F2	1631.8436	612.8038	0.013138	(F1-F2)
F3	1604.9816	623.0601	0.010018	(F1-F3)
F4	1548.4550	645.8050	0.00954	
F5	3236.7948	308.9476	0.007915	2*F1
F6	2490.1489	401.5824	0.006061	
F7	3166.8770	315.7685	0.005281	
F8	4108.5816	243.3930	0.00323	
F9	1528.0989	654.4079	0.00288	



Star01: BPM 31594

Tess

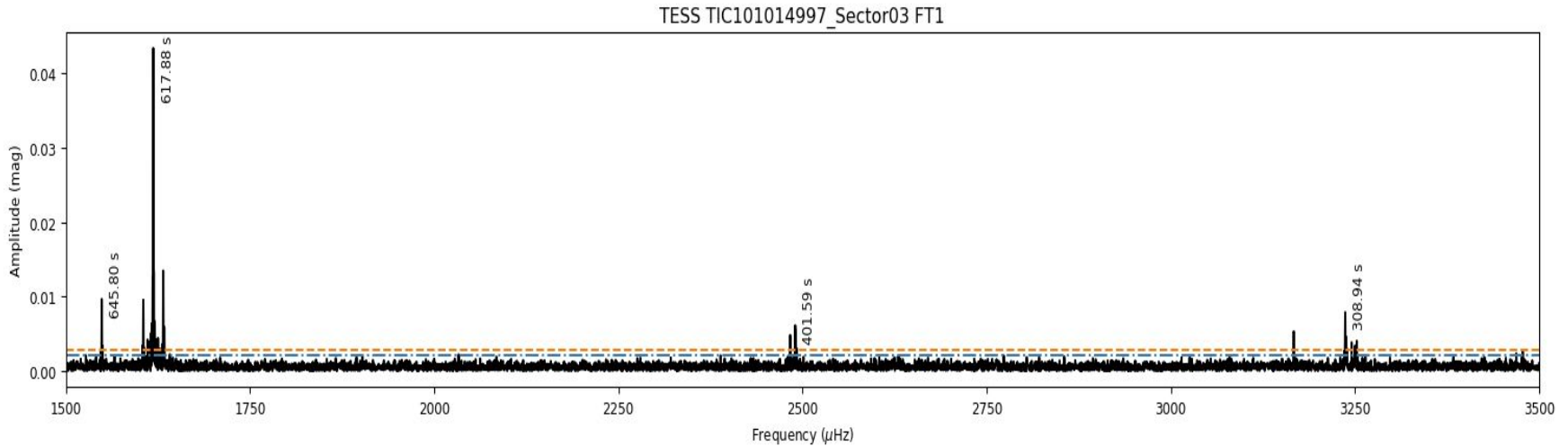
	Freq (mHz)	P (s)	amp (mag)	
F1	1618.4013	617.8937	0.04336	
F2	1631.8436	612.8038	0.013138	(F1-F2)
F3	1604.9816	623.0601	0.010018	(F1-F3)
F4	1548.4550	645.8050	0.00954	
F5	3236.7948	308.9476	0.007915	2*F1
F6	2490.1489	401.5824	0.006061	
F7	3166.8770	315.7685	0.005281	
F8	4108.5816	243.3930	0.00323	
F9	1528.0989	654.4079	0.00288	



Star01: BPM 31594

Tess

	Freq (mHz)	P (s)	amplitude (mag)
F1	1618.4013	617.8937	0.04336
F4	1548.4550	645.8050	0.00954
F6	2490.1489	401.5824	0.006061
F7	3166.8770	315.7685	0.005281
F8	4108.5816	243.3930	0.00323



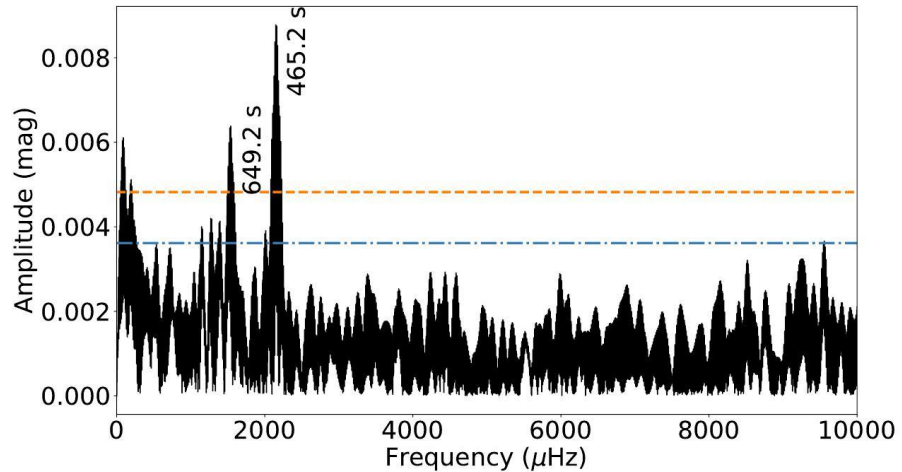
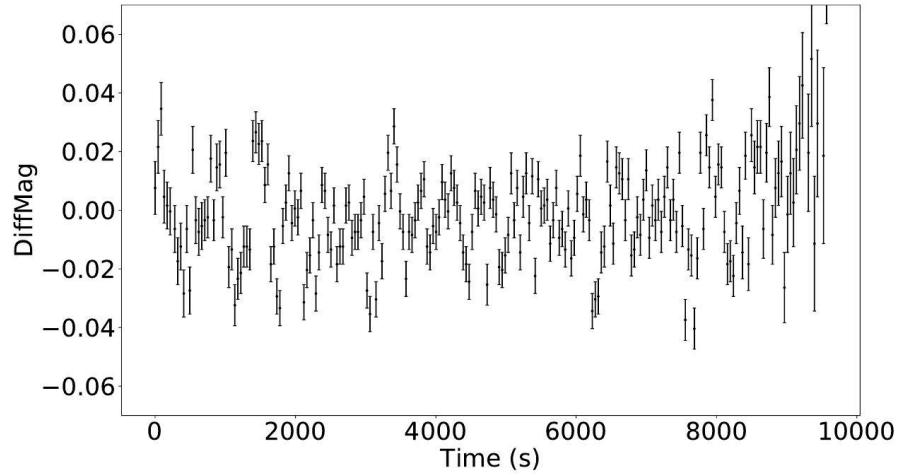
Star02: G195

Pico dos Dias (1.6 m)

Freq (mHz) P (s) amp (mag)

F1 2149.798 465.16 8.7

F2 1540.357 649.20 6.2

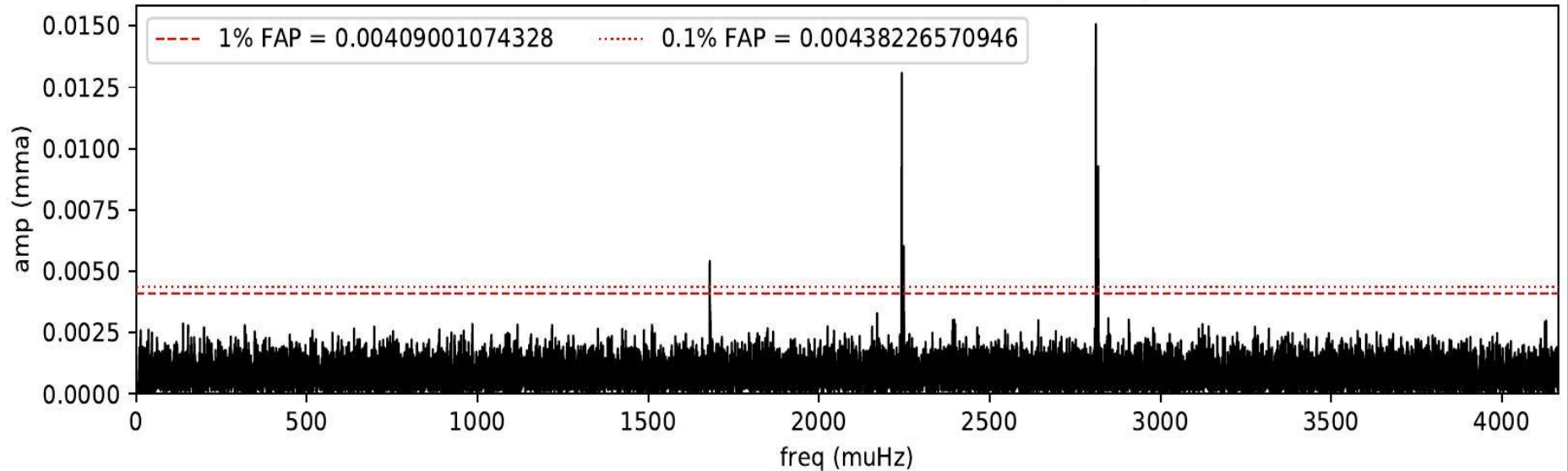


Star03: HS0507+434B

Tess

	Freq (mHz)	P (s)	amp (mag)
F1	2810.93217	355.75	0.014976
F2	2242.40769	445.95	0.013066
F3	1681.17992	594.82	0.003581

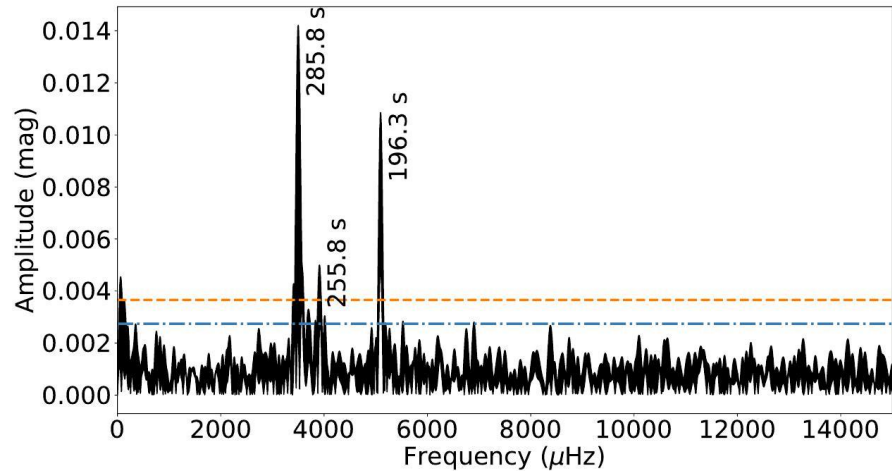
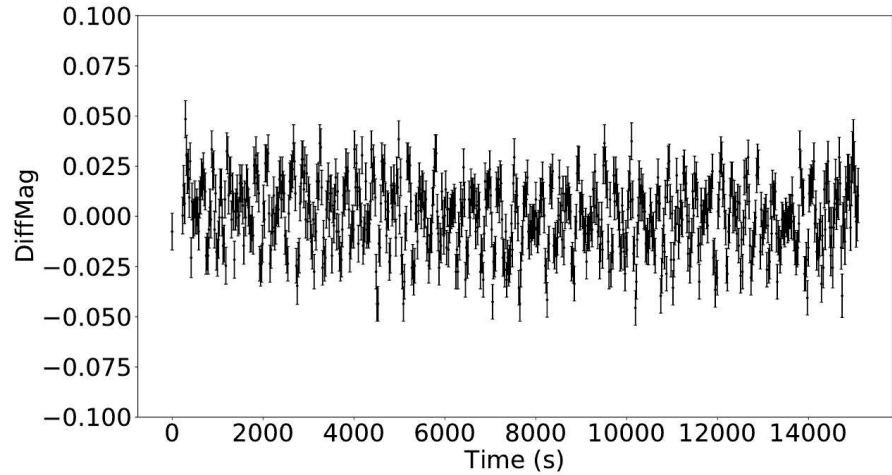
TIC455094688 DAV Sector 5 Oversampled by 10



Star04: J0828+0949

SOAR, 4.1 m

	Freq (mHz)	P (s)	amp (mag)
F1	3499.073	285.79	14.0
F2	5093.984	196.31	10.9
F3	3909.610	255.78	5.0



VIII LAPIS “Pulsations along Stellar Evolution”

Pulsating White Dwarf Stars *exercices*

Alejandra Romero

Universidade Federal do Rio Grande do Sul

alejandra.romero@ufrgs.br